

Title of Project:

Mapping of Sickle Cell Anemia Prevalence in Chhattisgarh

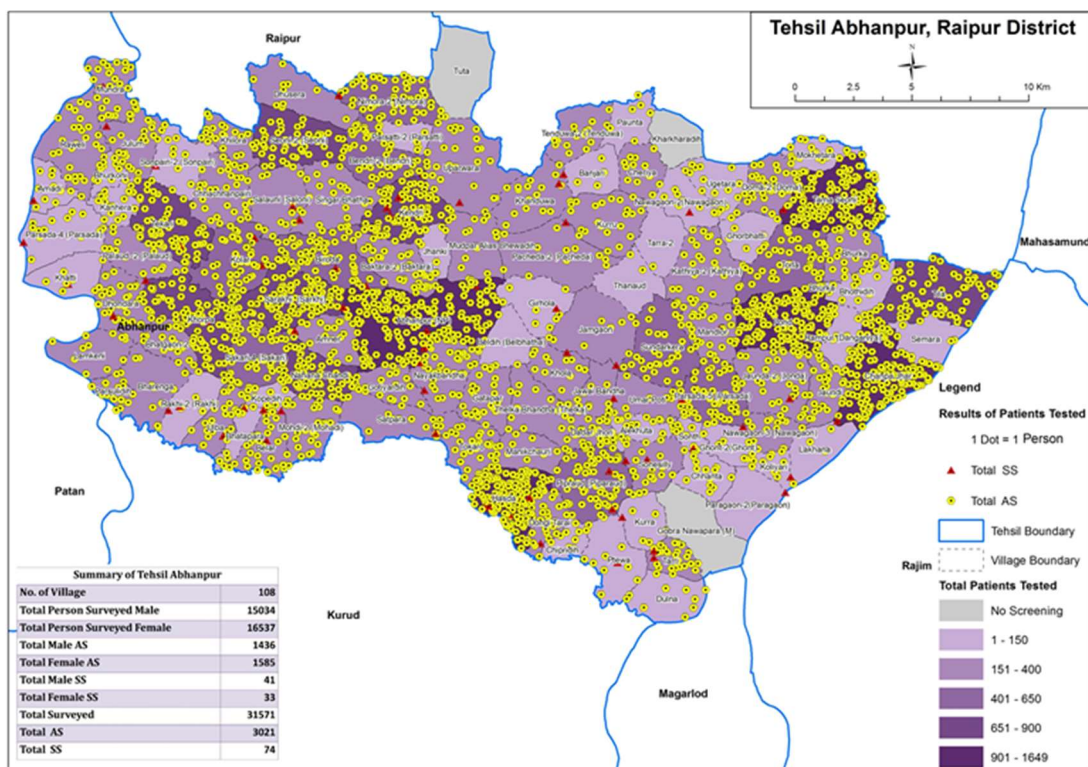
Name of Principal Investigator	Mr. P. Kawishwar
Scientific Team	Mr. Ram Kamal Bani, Junior Research Fellow
Name of Funding Agency	Sickle Cell Institute Chhattisgarh, Raipur
Tenure of Project	Ongoing Since 2017

Summary of Project:

The sickle cell gene, in India is distributed mainly in Chhattisgarh, Madhya Pradesh, Maharashtra, Orissa, Jharkhand, parts of Andhra Pradesh, Kerala, Karnataka and Tamil Nadu. Considering high prevalence of sickle cell anemia in Chhattisgarh, Government of Chhattisgarh has taken following initiatives to put major focus on counseling and providing a dedicated health care system to these patients.

The Project envisages to utilize the data collected during Sickle Cell Screening Project and intends to optimize counseling & clinical resource allocation and visualize the distribution of sickle cell patients in the State, District wise atlas preparation has been initiated.

Raipur District atlas has been submitted and work on remaining Districts is being initiated.



Distribution of Sickle Cell Patients in Abhanpur Tehsil