

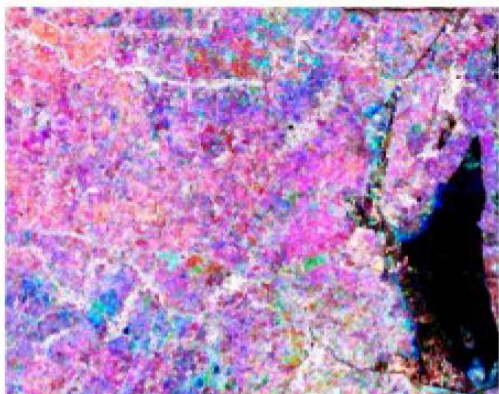
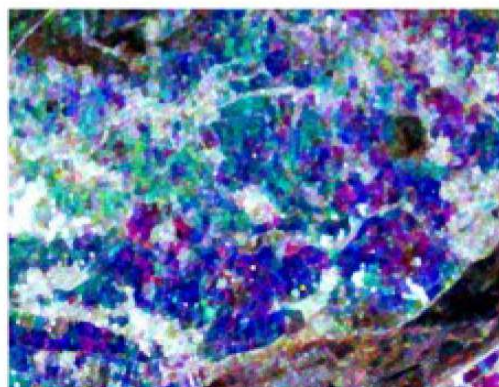
*Title of Project:*

## Crop Acreage and Production Estimation (CAPE) Project

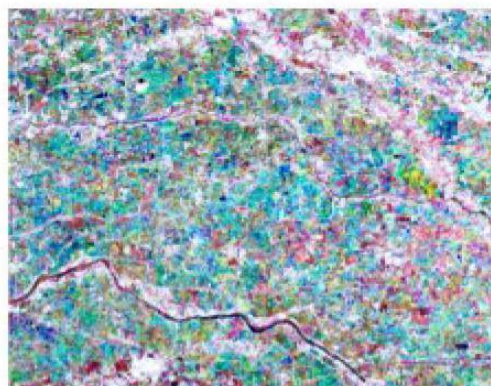
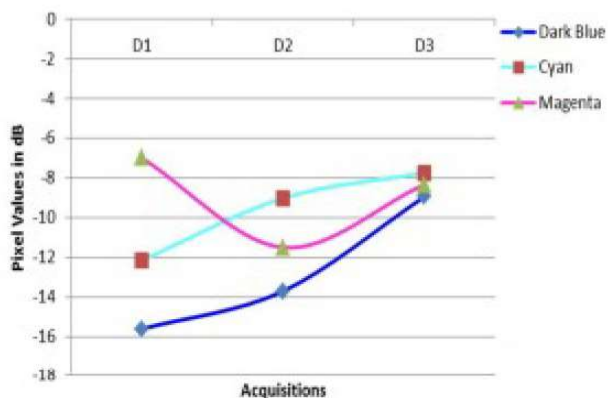
<b>Name of Principal Investigator</b>	Dr. Rajesh Sharma
<b>Scientific Team</b>	Mr. P. Kawishwar, Co-PI Mr. Akhilesh Tripathi, Co-PI
<b>Name of Funding Agency</b>	Space Applications Centre, Ahmedabad
<b>Tenure of Project</b>	2002 – 2009

### Summary of Project:

- Optical satellite data have limited application when the area is covered with clouds.
- States were selected for utilization of RADARSAT data to estimate acreage and production of Paddy in Chhattisgarh.
- The eight year experimentation resulted in formation of National Crop Forecasting Centre at New Delhi now known as MNCFC. The Project is now converted to FASAL Project.



### Paddy Signatures in VV Data



RADAR Satellite Data Analysis