

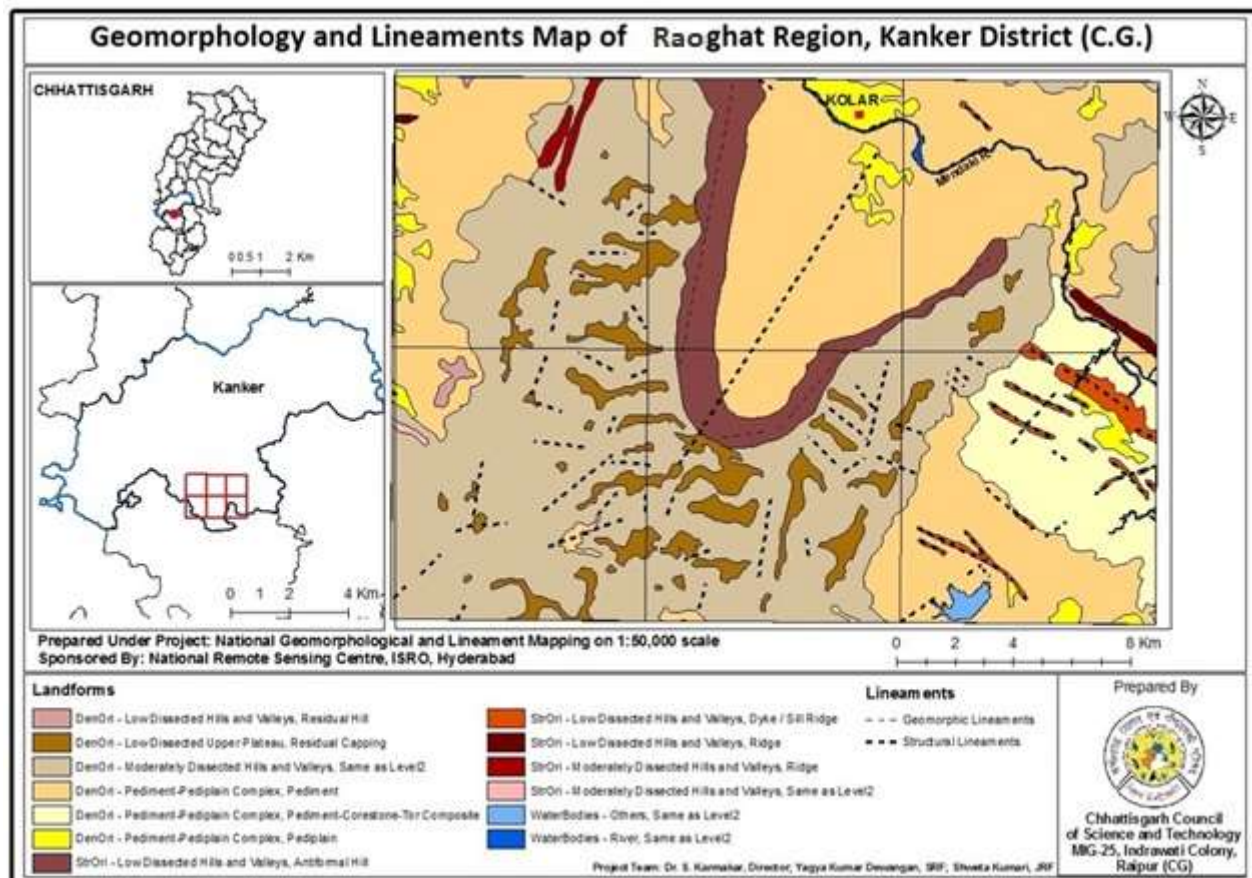
Title of Project:

National Geomorphological and Lineament Mapping Project

Name of Principal Investigator	Dr. S. Karmakar
Scientific Team	Ku. Sweta Rath, Senior Research Fellow Shri Yagya Kumar Dewangan, Senior Research Fellow Ku. Sweta Chaudhary, Junior Research Fellow
Name of Funding Agency	National Remote Sensing Centre, ISRO, Dept. of Space, Govt. of India, Hyderabad
Tenure of Project	3 Years (2010-13)

Summary of Project:

The Project on "Geomorphological and Lineament Mapping of Chhattisgarh on 1:50000 scale" has been completed. Geomorphological & Lineament maps both were prepared on 1:50000 scale for entire Chhattisgarh State using Satellite data along with ground truth data collection. The digital database of maps in GIS environment has been submitted to National Remote Sensing Centre, Dept. of Space, Govt. of India, Hyderabad (The sponsoring organization), subsequently the digital database of maps has been uploaded in Bhuvan Geoportal of NRSC, ISRO. The Project has been completed by CGSAC. The database is now available on Bhuvan Portal for use by various user departments / organizations of Central Government and State Government for mineral exploration, geo engineering, ground water exploration and hydrology, environmental studies, integrated land & water resources development, seismotectonic studies etc.



Geomorphology and Lineaments Map of Raoghat Region, Kanker District (C.G)